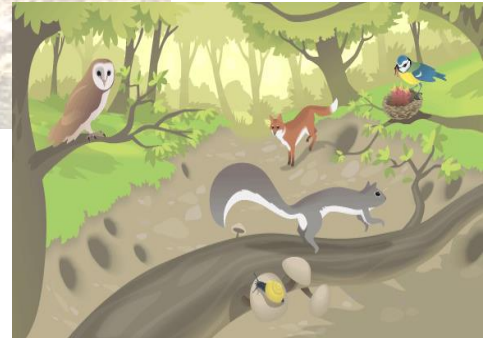
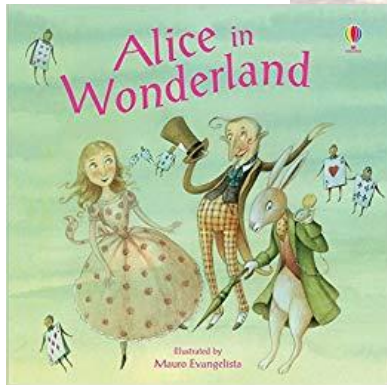


YEAR 2 HOME CHALLENGE! Autumn 1

This half term our theme is **'Wonderland!'** and is based on learning and exploring the fantasy story, Alice in Wonderland as well as learning about animal habitats in gardens and woodland areas.



We would love for you to get involved over the next few weeks with your child at home too, so here are some ideas for you to choose from or maybe you have some of your own ideas.

- Write a book review of Alice and Wonderland
- Make a simple board game or card game linked to animal habitats in the woods, or your garden or Alice and Wonderland
- Explore your garden, local park or woods and find out what lives there and where their habitat is, maybe draw a map of the area or take some photos and make a mini book to share
- Using an old shoe box recreate your garden, local park or woods showing the different creatures and their habitats

Useful Website:

<https://www.bbc.co.uk/bitesize/articles/zc42xnb>

We look forward to seeing any lovely home learning tasks in school to display and share with the other children or you can post them on SEESAW.

HAVE FUN!