



Welcome to Year 1 2021-2022



We hope that the information in this booklet will give you an introduction to the curriculum and overview of your child's time in Year 1. Our aim is to work together in partnership to ensure we provide a safe, happy and memorable learning experience for your child.

With thanks,

Mrs Kotzé and the Year 1 team

Meet the Team



Mrs Kotzé
Newt Class
Year Group Lead



Miss Carmichael
Frog Class



Miss Irukieta
Dragonfly Class



Miss Goodman
Duck Class



Miss Brown
Heron Class



Year 1 Aims

In Year 1 we aim for all children to feel safe, happy and engaged in their learning whilst we continue to build on the key skills and knowledge from the EYFS curriculum.

We will do this by providing and developing:

- an inspiring and exciting curriculum through a variety of half termly themes
- opportunities to share, listen and talk about a variety of books
- opportunities to talk and work with all their peers
- broadening vocabulary
- independence skills
- creativity
- an engaging environment
- a plan for delivery to meet the needs of all children



A Day In Year 1

We recognise that Key Stage 1 (Year 1 and Year 2) is different from the Early Years Foundation Stage, we therefore aim to manage the transition from Reception to Year 1 in a gradual, staged approach, which allows the children time to adapt.

Autumn Term:

At the start of the Autumn term continuous provision will still be set up for the children to access after some whole class teaching inputs. This will be planned using a carousel approach so children complete a variety of activities throughout the day. This will support the development of working independently on a given task. All adults will work with focussed groups of children for Writing, Maths, and other curriculum areas throughout the day.

Throughout the Autumn term the length of time continuous provision available will decrease as whole class teaching increases.



Spring and Summer Terms:

Whole class teaching will be fully embedded and the children will be working with increasing independence on the tasks that are planned throughout the day. Adults will continue to work with focussed groups of children for Writing, Maths, and other curriculum areas throughout the day.



National Curriculum

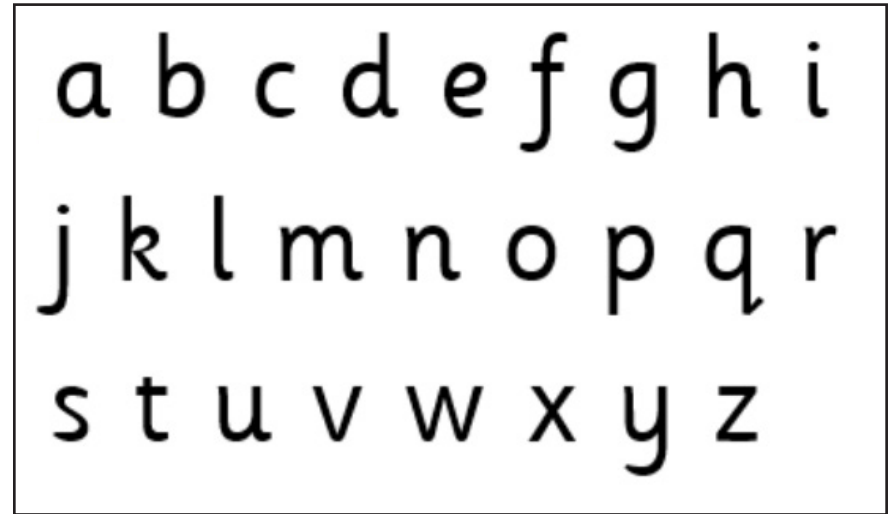
The Year 1 English National Curriculum is divided into the following areas:

- Word Reading and Comprehension
- Handwriting
- Composition (Writing)
- Vocabulary, Grammar and Punctuation

Reading

- Children continue to develop their phonics knowledge with the Read Write Inc approach.
- Children are assessed every half term to ensure they are accessing the correct level of phonics for their ability. They are then grouped for learning with children at the same stage.
- As the children progress through their phonics, we encourage them to read with increasing independence and to use their phonic strategies to support them when needed.

- The more frequently they re-read a text, the more fluent they will become at reading.
- The children will bring home the RWInc book they have been reading in school, so they can share this confidently and independently with an adult.
- The children will also bring home a RWInc Book Bag Book, which matches the RWInc group they are in, to further practice their reading skills.
- Comprehension skills are developed through class discussions when reading texts during Literacy and story times as well as during RWInc lessons.



Spelling and Handwriting

- In Year 1, children develop some of their spelling knowledge through their RWInc lessons
- The children will also receive additional spelling sessions throughout the week to meet the KS1 National Curriculum Spelling Curriculum
- The children will be assessed regularly on their ability to spell the Year 1 Common Exception Words.
- At the end of Year 1 children are expected to know how to spell most of the 44 Common Exception Words accurately and apply them to their writing
- The children will receive daily handwriting practice using the following style of letters



Writing

- During Year 1 we continue to develop sentence structure using capital letters, full stops, spaces between words and to check the sentences are grammatically correct.
 - We provide opportunities on a weekly basis to apply sentence and grammar skills to a composition piece of writing. We write for a given purpose using our themed learning and exciting texts e.g. letters, stories, factual writing, diary entries etc.



Maths

The Maths Curriculum includes the following areas;

- Number and Place Value
 - Addition and Subtraction
 - Multiplication and Division
 - Fractions
 - Measurement
 - Properties of Shape
 - Position and Direction
-
- Maths is taught using the principles and approaches of Singapore Maths – **Practical, Pictorial, Abstract**
 - We carry our daily Maths Meetings which are quick, short sessions that provide opportunities to consolidate a variety of skills and knowledge
 - Mental Maths skills are taught explicitly throughout the week.



Phonics Screening

In Year 1, the children are required to take the Phonics Screening Check in June. This is a national statutory screening check that all Year 1 children are required to take. It is designed to assess the children's ability to blend the sounds taught in real and unknown (alien) words.

Parental Responsibilities

PE and Swimming

- The children will have a weekly PE lesson and later in the school year will also have a weekly swimming lesson. Until swimming begins there will be an additional PE lesson.
- Timetables for PE and Swimming will be shared via newsletters, the website and in the classroom windows
 - Please make sure the children attend school wearing their PE kit on their timetabled PE day
 - Please ensure that children bring in their swimming kit every week.
 - Long hair must be tied up during these sessions.
 - Earrings must be removed.

Outdoor Learning

- Children take part in Outdoor Learning for a whole day every 3 weeks.
- Children need to come to school dressed in appropriate clothing and shoes for the weather, not school uniform
 - Wellington boots can kept in school. Please make sure these are named.

Attendance

Please help your child by not being late. If, for an exceptional reason, you are late in the morning please take your child to the school office, so they can be signed in.

It is important that your child attends school every

day. If they are ill, please telephone and leave a message with the school office before 10.00am.

Dropping off and Collecting

You will need to drop off and collect your child from your child's class door via the Poynings Avenue entrance, where they will be greeted in the morning and handed over in the afternoon by the Class Teacher.

Please make sure your collection forms are up to date. If there are any changes then please go to the school office, so we can update our records.

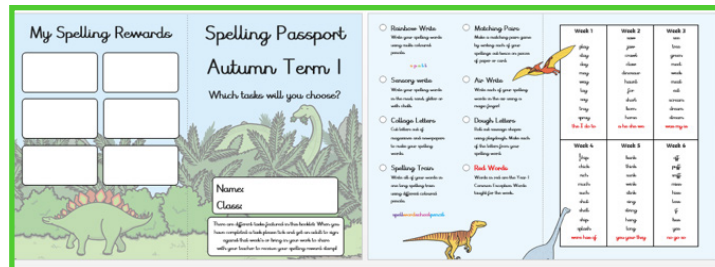


Home Learning

You will receive more guidance on the Home Learning that will be set and how to help your child at home in Year 1 at the beginning of the Autumn Term. Here is an outline of what we have planned.

What will be doing?

- Sending home a RWInc reading book that they have read in school and a RWInc Book Bag Book to further practice their decoding and fluency skills
- Encouraging the children to develop their independence when changing their Reading books
 - Each week encouraging the children to choose a library book to take home, which you can share and enjoy together.
 - We will send home a 'Spelling Menu' organised into a passport. The 'passport' lists spellings that are being focussed on each week in Year 1 and suggested activities



- We will set up a Numbots account, this is an interactive online tool for each child to use so they can practice their Maths skills
- We will provide a Mental Maths Key Instant Recall Facts challenge every half term
- Every half term we will send home a 'Home Learning Challenge' linked to the Year 1 theme. This will provide open ended suggestions of activities linked to the theme for the

children to explore if you wish to support their learning

- Some children may come home with different key words to practice for reading or spelling if they are finding them tricky or to support their learning needs
- We will keep you up to date with our learning and ways to help on the schools weekly newsletters and Twitter feed @Hamstel_Inf

What would we like you to do?

- Please try and spend 10 minutes each day listening to your child read and record it in their Reading Record Book
- Please encourage your child to practise their spelling patterns and key words they are learning each week in class independently
- Please encourage your child to log in and complete the tasks on Numbots and practise their Mental Maths Key Instant Recall Facts challenge
- Please celebrate all achievements and bring to school any extra home learning completed to share
- Please enjoy sharing books together and develop a love for reading for pleasure

Open Door

Every Friday we would we would usually operate an open door system after to school. This will be reinstated when we are able to but currently we are following Government advice which does not allow parents into the school building as yet.





Hamstel Infant School & Nursery
Hamstel Road,
Southend on Sea,
Essex,
SS2 4PQ

01702 468461
office@his.porticoacademytrust.co.uk
www.hamstelinfants.co.uk